



Pinhole view



6 mm plywood used for body



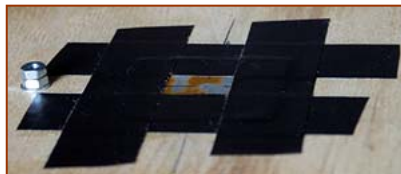
Apertures made from thin aluminum plate (beer can used). There are holes in center :- ) and size written (mm).



Aperture caps



Exposing



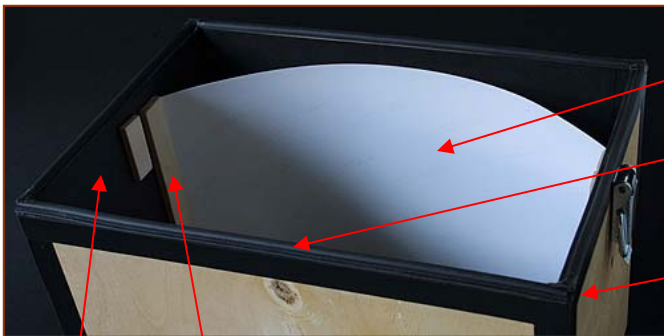
Aperture view from inside. It is fixed by tape – can be exchangeable.



Cover lock.



Cover lock with protector (prevents from unintended opening and indicates, that negative is loaded)



Loaded negative

Cover tightening rubber

Silicone sealant in the corners

Blackened inside (paper)

Negative holders

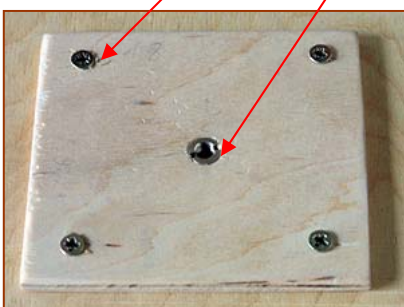
screws

1/4" to 3/8 " adaptor

Table mounted on tripod



Final view. Ready to shoot.



Pinhole table mount for tripod

